

# EXTERNAL FINANCIAL ASSISTANCE

## INDEX

---

1

**Medical bill/  
Long term medical care**

2

**Elderly/Disabled family  
member**

3

**Lost of job**

4

**New-born sibling**

5

**Low income**

---

---

# EXTERNAL FINANCIAL ASSISTANCE

Medical bill/  
Long term medical care

## MINISTRY OF HEALTH

### 1. MEDIFUND

Assistance on remaining medical bill after government subsidy



#### *HOW TO APPLY?*

You or your family can approach the Medical Social Workers at the MediFund-approved institution at which you had treatment. In addition to MediFund, they will also be able to explore other possible financing means with you



### 2. INTERMEDIATE LONG TERM CARE SERVICES (ILTC)

Subsidy for recipient who needs to be in community hospital/residential home/hospice/day centre or homecare programme or on dialysis



#### *HOW TO APPLY?*

Please approach the staff of Government hospitals or MOH-funded ILTC service providers. He or she will help you with your application through the completion of the Means-test Declaration Form



---

# EXTERNAL FINANCIAL ASSISTANCE

Elderly/Disabled family member

## AGENCY FOR INTEGRATED CARE

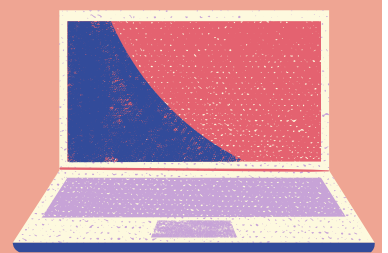
### HOME CAREGIVING GRANT

Monthly cash payout to support family member with at least permanent moderate disability, i.e. always require some assistance to perform three or more Activities of Daily Living (ADLs)



#### *HOW TO APPLY?*

Visit <https://www.aic.sg/financial-assistance/home-caregiving-grant> for detailed information



---

# EXTERNAL FINANCIAL ASSISTANCE

Lost of job

**WORKFORCE SINGAPORE**

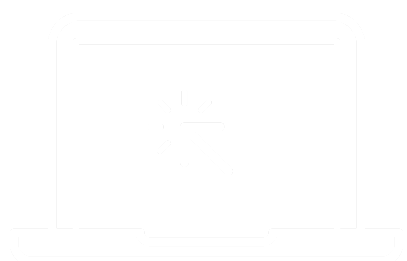
## **SGUNITED MID-CAREER PATHWAYS PROGRAMME**

Industry-relevant attachment programmes  
lasting up to 6 months with training allowance



### *HOW TO APPLY?*

Visit <http://www.mycareersfuture.gov.sg/>  
to apply



---

# EXTERNAL FINANCIAL ASSISTANCE

New-born sibling

**MINISTRY OF SOCIAL AND FAMILY  
DEVELOPMENT - EARLY CHILDHOOD  
DEVELOPMENT AGENCY**

## **GOVERNMENT SUBSIDIES FOR INFANT CARE AND CHILD CARE**

Defray preschool expenses for Singaporean children



### *HOW TO APPLY?*

Visit <https://www.ecda.gov.sg/Pages/Subsidies-and-Financial-Assistance.aspx> for detailed information



---

# EXTERNAL FINANCIAL ASSISTANCE

Low income

MINISTRY OF SOCIAL AND FAMILY DEVELOPMENT

COMCARE SHORT-TO-MEDIUM-TERM ASSISTANCE  
COMCARE LONG-TERM ASSISTANCE  
COMCARE INTERIM ASSISTANCE

Cash, voucher, or food ration depending on scheme



## HOW TO APPLY?

Visit any of Social Service Offices to apply

